

## Universal Oil Coolers



Davies Craig offers several types of Transmission & Engine Oil Coolers Ultra-Cool and Hydra-Cool models.

### Hydra-Cool®

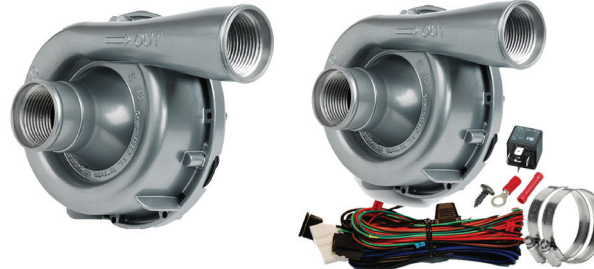
- ⊕ Plate and Fin construction, available in 12 to 30 plate sizes
- ⊕ Thickness sizes 20mm, 32mm & 50mm transmission & universal engine oil coolers
- ⊕ 100% pressure tested to ensure reliability and durability high efficiency designed turbulators for superior heat transfer
- ⊕ Inlet / Outlet size 3/8" (9.5mm)

### Ultra-Cool®

- ⊕ Contemporary Tube & Fin construction
- ⊕ 100% pressure tested to ensure reliability and durability
- ⊕ Proposed for earlier model automatic transmissions prior to 1990
- ⊕ Complete components and instructions for simple DIY Installation.



## EWP Retail Packs



**EWP Only**

**EWP Kit**



**EWP Combo**



World's best auto cooling



Australian Made

Head Office:  
Davies, Craig Pty Ltd  
61-67 Taras Ave, (PO Box 363) Altona North,  
Victoria 3025, Australia  
Ph: +61 3 9369 1234, Fax: +61 3 9369 3456  
Email: [info@daviescraig.com.au](mailto:info@daviescraig.com.au)

[daviescraig.com.au](http://daviescraig.com.au)

Printed March 2023



# DAVIES, CRAIG

World's best auto cooling



**NEW**



**EWP 80**

[daviescraig.com.au](http://daviescraig.com.au)



In 1971, belt-driven fans were the only option for automotive cooling. Searching for a more efficient method, Australian engineers Daryl Davies and Bill Craig created the Thermatic Fan. Davies, Craig was formed to manufacture the new electric fans, and has since developed a comprehensive range, covering most makes of vehicles.

The company followed up in 1999 with the launch of the World First universal-fit remote mounted Electric Water Pump (EWP®80). Replacing the engine driven mechanical water pump, the EWP® is installed in the bottom radiator hose and offers an economic advantage, more efficient coolant flow independent of engine speed and more usable power. The EWP® is also used extensively for Intercooler applications.

- ⊕ Australian manufacturer 50 years
- ⊕ Thermatic® Electric Fans
- ⊕ Electric Water Pumps, EWP®
- ⊕ Electric Booster Pumps, EBP®
- ⊕ Thermatic® Fan Switches
- ⊕ Transmission Oil Coolers



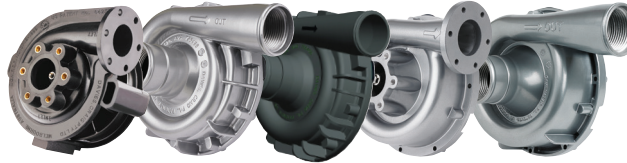
## Thermatic® Electric Fans



- ⊕ Universal fit, replaces OE fans, engine-driven fan and/or fan clutch
- ⊕ Up to 10% increase in power & fuel saving when replacing engine-driven fan and/or fan clutch
- ⊕ Reversible install – front and rear of radiator
- ⊕ Available sizes; 8" 9" 10" 12" 14" & 16" – 12 or 24 Volt.



## Electric Water Pumps



EWP80 EWP115 Alloy / Nylon EWP140 EWP150

- ⊕ Flow capacity 90 to 162 litres / minute
- ⊕ Available in 12V & 24V, Nylon 66 Glass filled & Aluminium powder coated in silver or black
- ⊕ World's first universal fit, remote mount EWP®
- ⊕ Replaces or complements existing belt driven mechanical water pump
- ⊕ Suits engine cooling & intercooler pump applications
- ⊕ More efficient coolant flow
- ⊕ Neat, compact



## Pump & Fan Controller

- ⊕ Compact, simple, optimum coolant temperature management system
- ⊕ Varies pump speed/coolant flow in response to coolant temperature
- ⊕ Activates Electric Fans at +3°C above set/target temperature
- ⊕ Simple push-button temperature setting between 40°C to 110°C (104°F - 230°F)
- ⊕ Controller allows EWP® and Fan to run-on after engine shut-down to eliminate heat soak
- ⊕ Override feature to assist with bleeding the EWP® & fail safe contingency



Part #8002

## Electric Booster Pumps



EBP23 EBP25 EBP40

- ⊕ Compact, lightweight design
- ⊕ Magnetically driven brushless motor
- ⊕ Up to 10,000 hours of serviceable life
- ⊕ Simple DIY installation
- ⊕ Low current draw
- ⊕ Fit hose size 18 to 20mm
- ⊕ Some models available in 12 or 24 Volt
- ⊕ Available in flow capacities 23 to 40 litres/minute
- ⊕ Diverse range of applications; vehicle, solar, marine, water-cooled motorcycles, water-to-air intercoolers, caravans, motorhomes and domestic irrigation



## Thermatic® Fan Switches



Parts #0401 #0400

Parts #0444 & 0445 0435, 0438, 0448

Part #0500

- ⊕ Universal fan applications
- ⊕ Precise set/target coolant temperature control
- ⊕ Automatically activates Electric Fans, EWP & EBP
- ⊕ Can measure air or coolant temperature
- ⊕ Adjustable set temp; 40°C - 110°C (104°F - 230°F)
- ⊕ 12 or 24 Volt applications (requires 2 x 24V relays)